

HUBBLE



USER GUIDE

SAFETY INFORMATION

- The appliance is not intended for use by persons (including children) with reduced physical, sensory or mental capabilities, or lack of experience and knowledge, unless they have been given supervision or instruction concerning use of the appliance by a person responsible for their safety.
 - Children should be supervised to ensure that they do not play with the appliance.
 - The device should only be used with the power supply supplied with the device.
 - The appliance is only to be used with the recommended vaporizing medium. The use of other substances may give rise to a toxic or fire risk.
-

- Please leave 30 mm around the Hubble control unit to ensure normal functioning of the product.
 - Dimensions of the Hubble control unit: H 94 mm x W 63 mm x D 32 mm.
 - Dimensions of the folded fan and capsule holder:
H 84 mm x W 44 mm x D 48 mm.
 - Provide an air outlet of dimensions 100 mm x 20 mm or a hole of diameter 50 mm for the supply of fresh air.
 - Provide an outlet for fragranced air of 40 mm x 40 mm or a hole of diameter 50 mm.
-

- Do not use the product if:
 - it shows visible damage or malfunctions,
 - a cord seems damaged.
- Never disassemble the device yourself.
- Use only in environment < 80% humidity and temperature between 10 and 30°C.
- Do not put any metallic object near the Hubble.

FOR EUROPEAN MARKETS ONLY

- This appliance can be used by children aged from 8 years and above and persons with reduced physical, sensory or mental capabilities or lack of experience and knowledge if they have been given supervision or instruction concerning use of the appliance in a safe way and understand the hazards involved.
- Children shall not play with the appliance.
- Cleaning and user maintenance shall not be made by children without supervision.
- Keep the appliance and its cord out of the reach of children aged less than 8 years.



Let's help to protect the environment!

Your appliance contains many materials that can be reused or recycled. Take it to a collection point so it can be processed.



Information concerning the CE

The CE marking indicates that the product meets the main requirements of European Directives: 2014/35 / EU (Low Voltage), 2014/30 / EU (Electromagnetic Compatibility).

SUMMARY

■ Safety information	2
■ Technical characteristics	7
■ Dimensions	8
■ Content of Box	9
■ Fan and capsule holder	11
■ Integration of the Hubble	16
■ Connectors	18
■ Connecting the Hubble	19
■ How to trigger fragrances	20
■ How to position the fragrance air flow	20
■ Place of the capsule in the support	21
■ Warranty	21

HUBBLE FRAGRANCE DIFFUSER

Thank you for purchasing the Hubble fragrance diffuser.

The Hubble is a system allowing you to provide contactless olfactory experiences to your guests and customers.

Easy to install and to trigger, it offers a totally safe dry fragrance diffusion.

Please read this manual carefully so you can use your diffuser properly and safely.

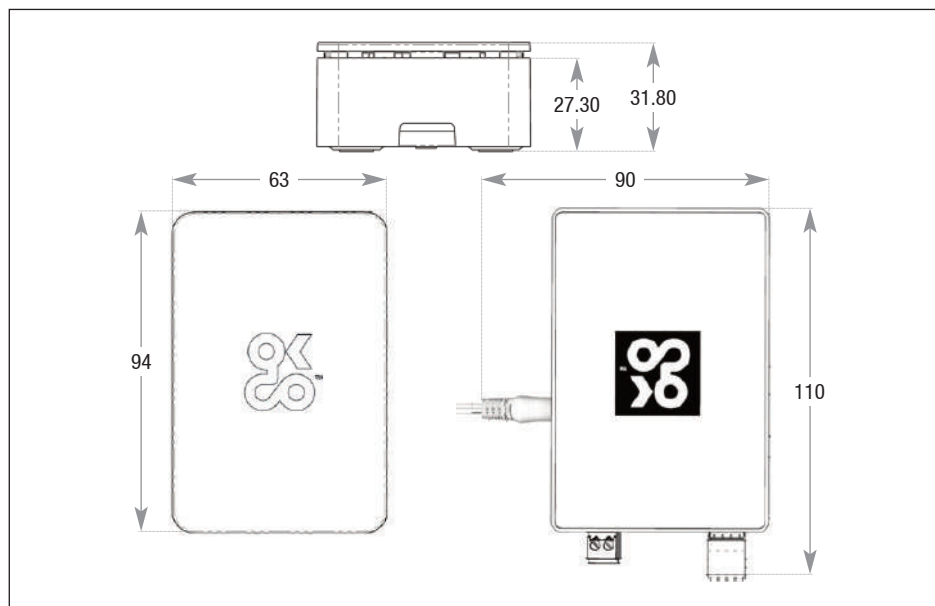
For any inquiries about this diffuser, please contact us at "info@scentys.com".

TECHNICAL CHARACTERISTICS

Dimensions	- Height	94 mm
	- Width	63 mm
	- Depth	32 mm
	- Weight	0,253 kg
Power supply	EU Plug 100-220V (5V output)	
	or 3 x LR6 AA Battery (not provided)	
Power consumption	0,5 W	
Type of diffusion	Dry diffusion technology	

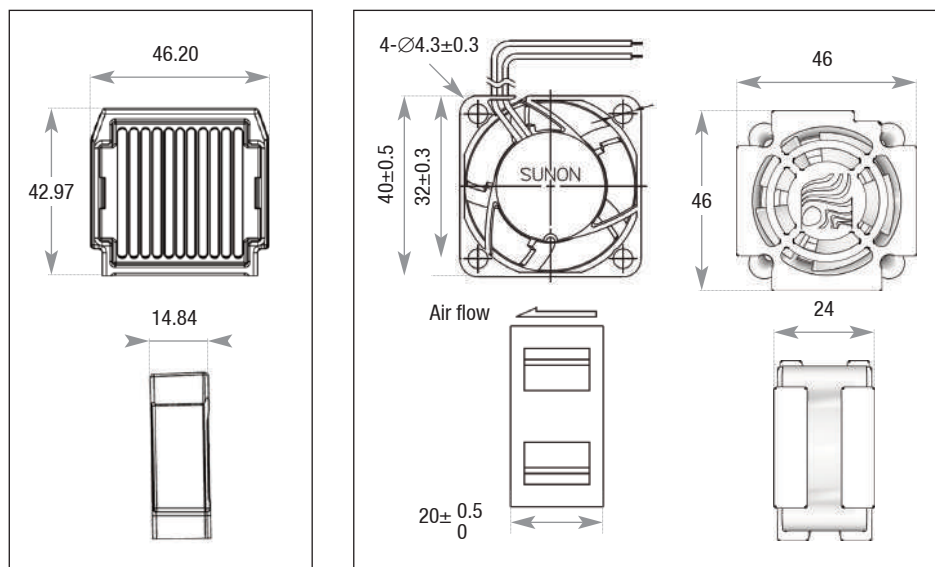
DIMENSIONS (mm)

HUBBLE CONTROL UNIT

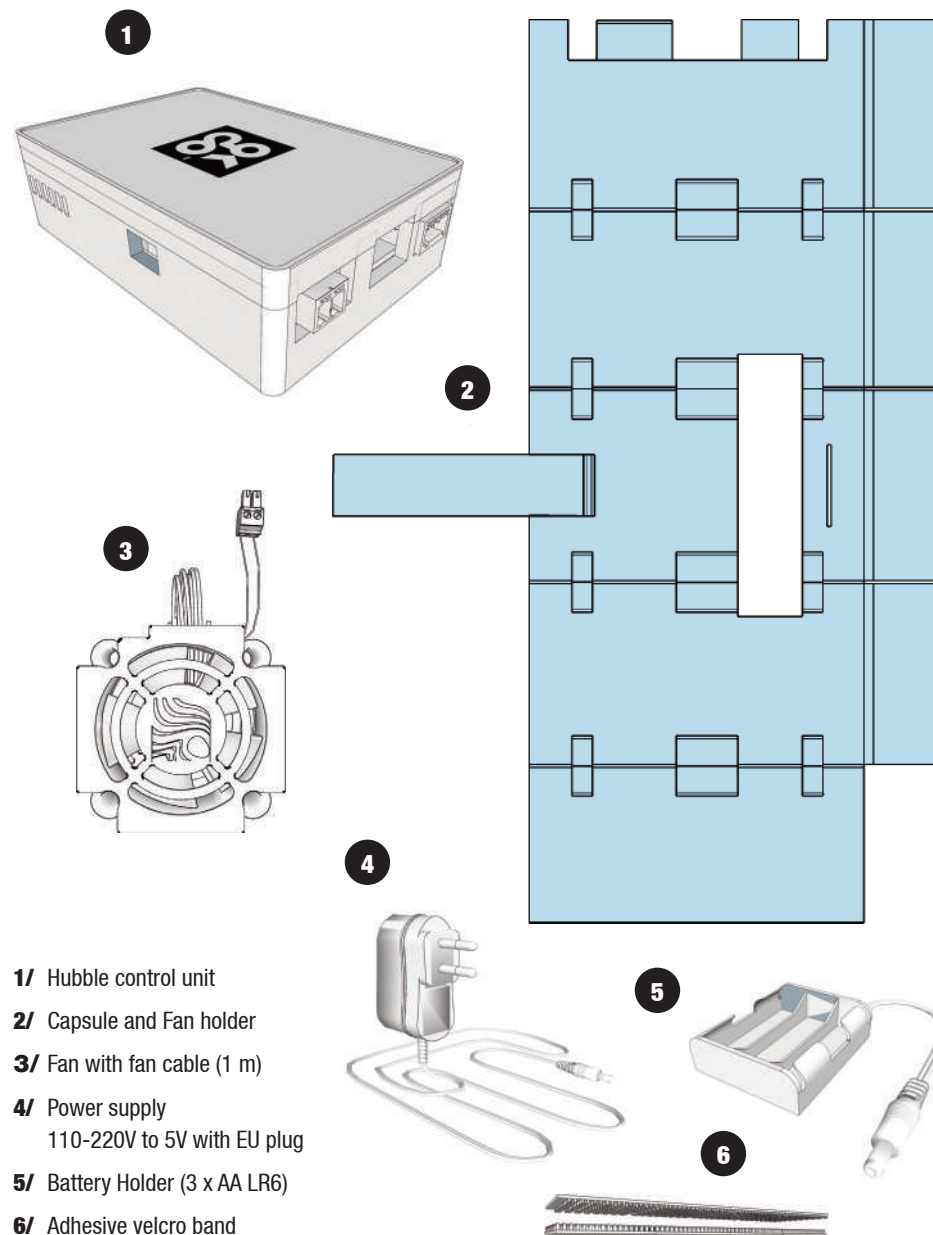


CAPSULE

FAN



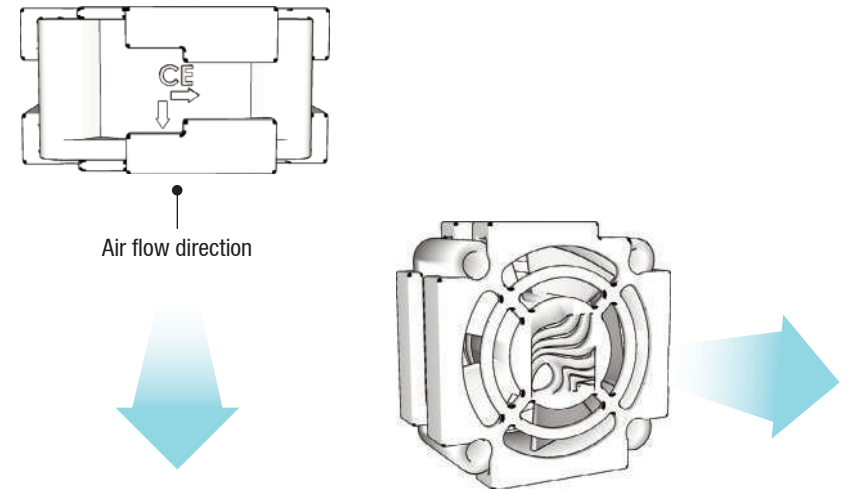
CONTENT OF BOX

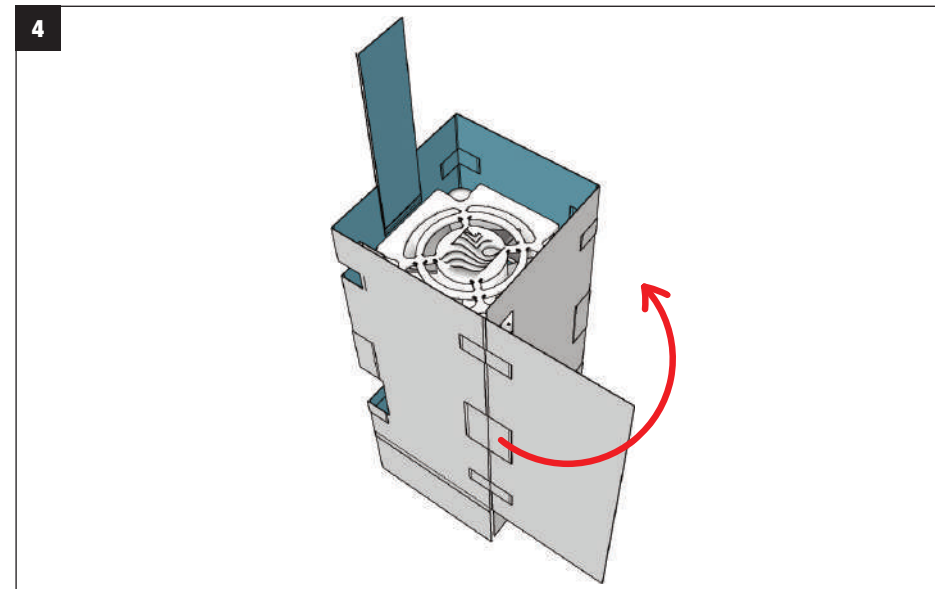
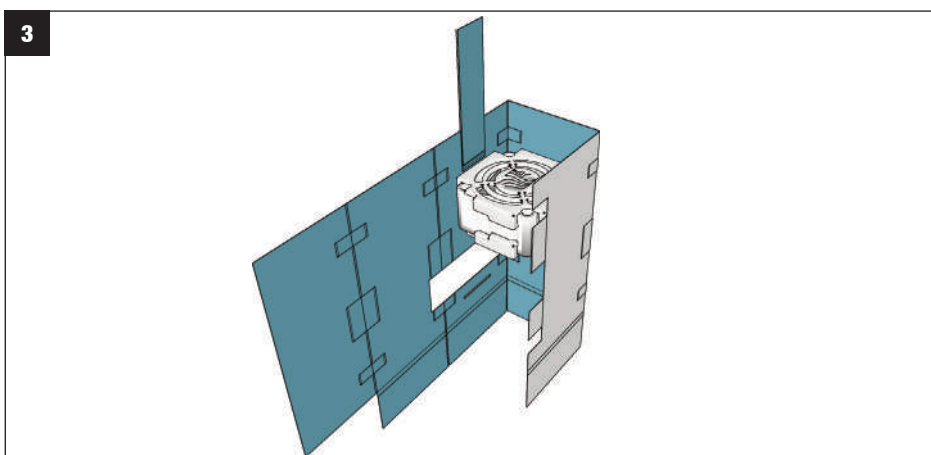
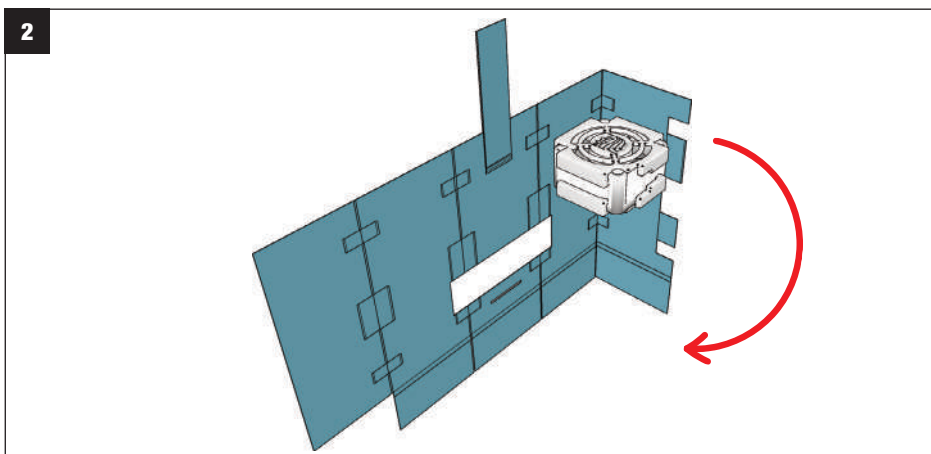
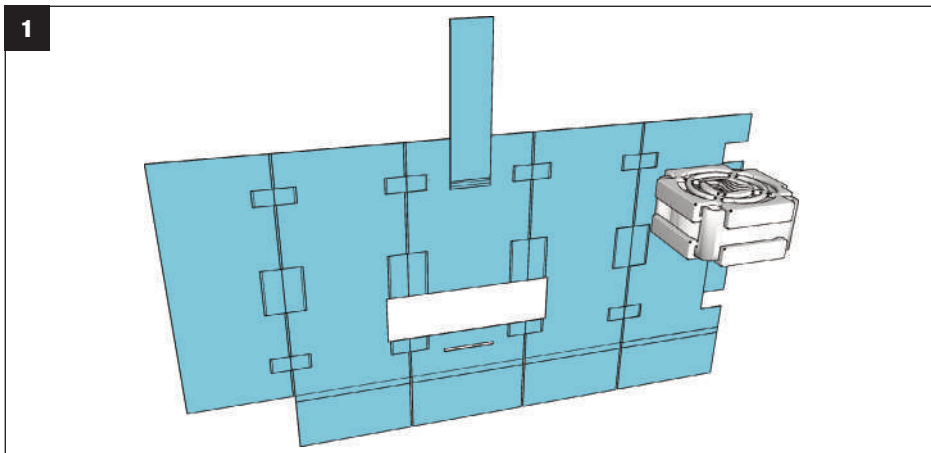


- To hold the capsule (not provided) and the fan, the support has to be folded this way:

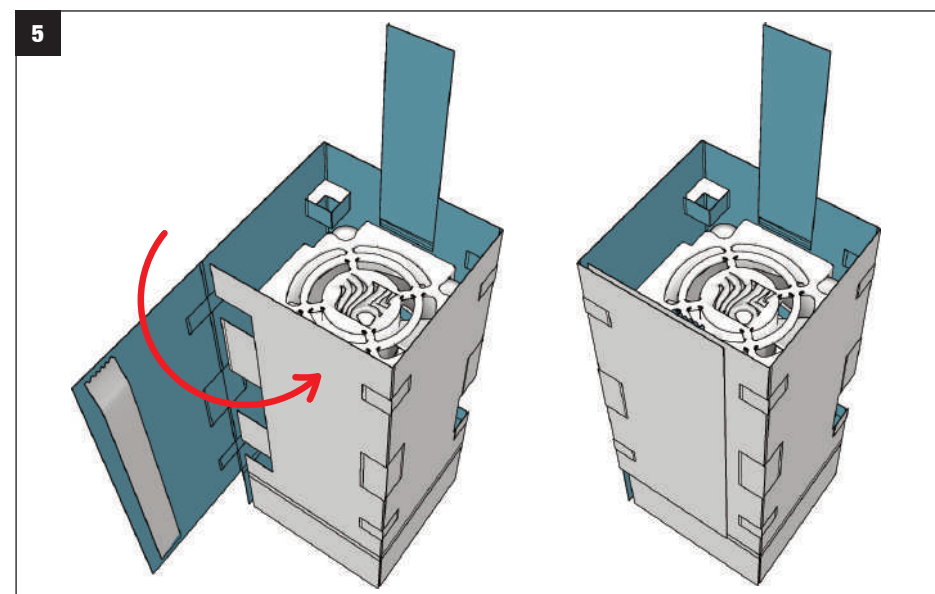
Important:

Make sure that the fan air flow is directed toward the Scentys capsule.
The air flow direction is indicated by an arrow on the fan.

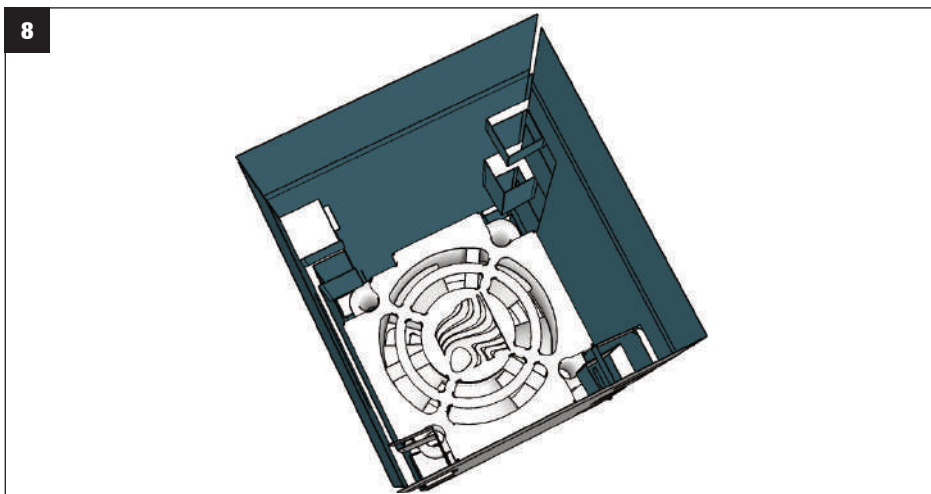
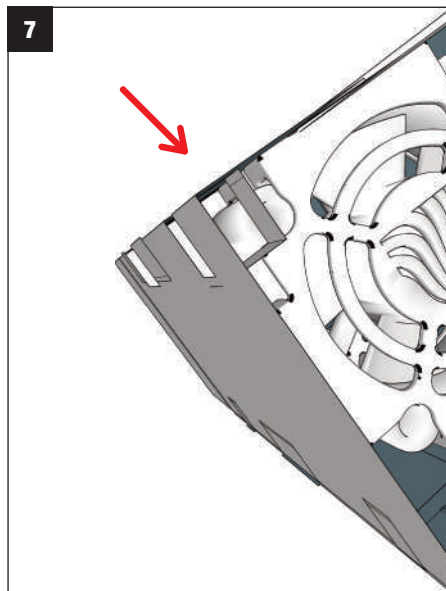
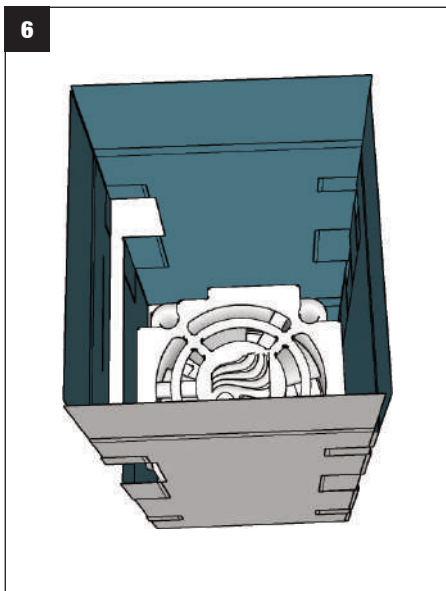




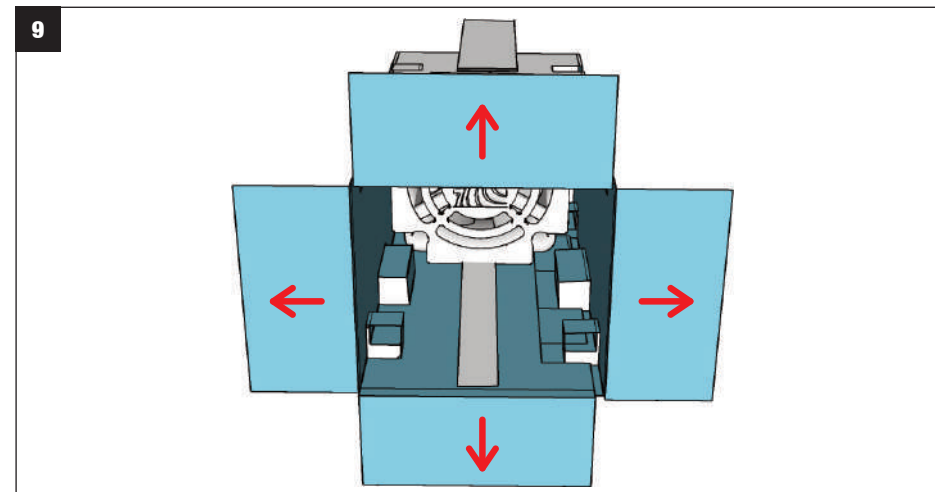
1 1 2 1 3 1 4. Wrap the support around the fan.



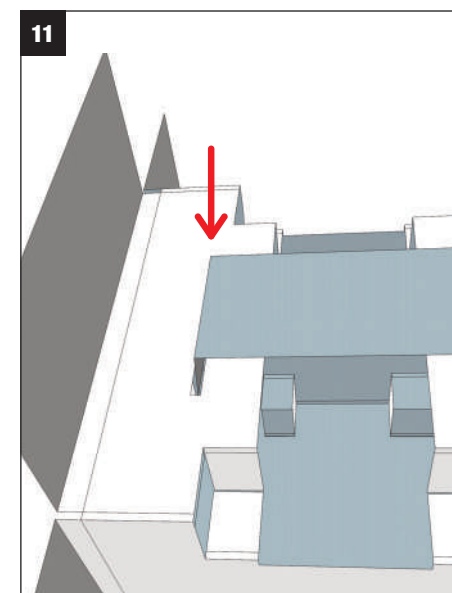
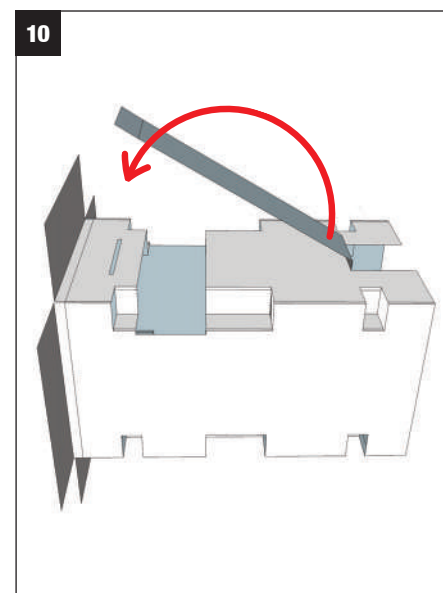
5. Use double-sided tape to complete this step.



6 | 7 | 8. Push all the angles inside the holder to secure the fan position.



9. Fold the four bands.



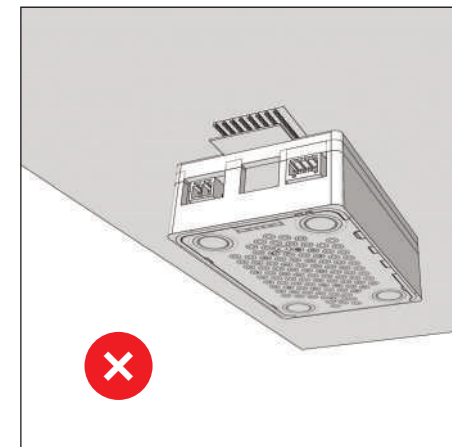
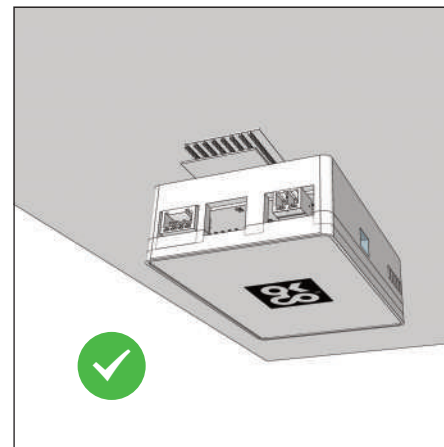
10 | 11. Insert the last strip band into the opening in order to secure a Scentys capsule. The support for the fan and capsule is now complete.

INTEGRATION OF THE HUBBLE

Important:

- The system will need fresh air from outside your POS stand or your furniture.
- The fragrance flow must not be obstructed.
- Make sure to have access to the capsule and fan holder to allow capsules replacement.
- Odors and surrounding polluted air must be avoided at all cost.
- Please read the Guideline before integrating the Hubble: LIB-DOC-20-Vx General guidelines for installing Scentys capsule-based products.

Contact: info@scentys.com

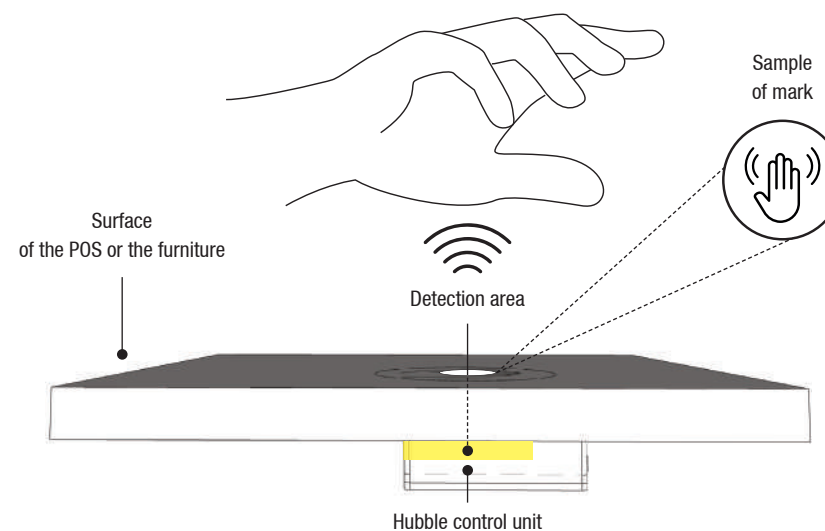
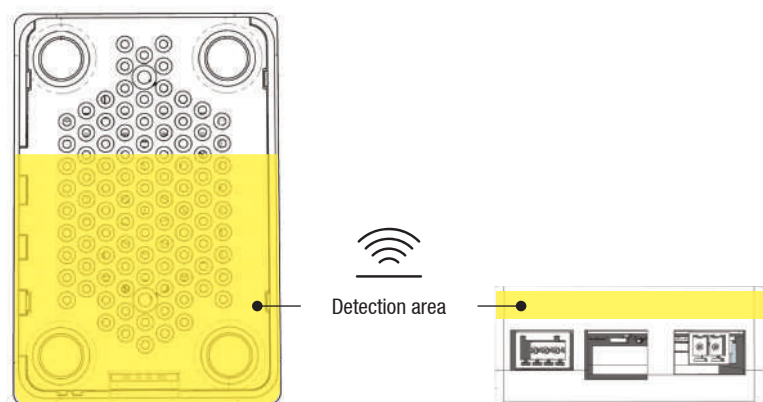


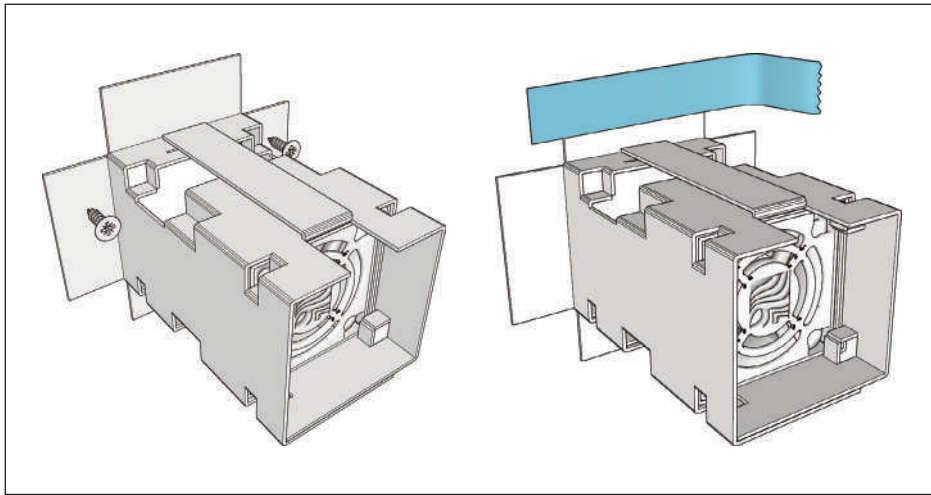
- Place the Hubble control unit under your furniture or POS, as indicated above. Use the adhesive velcro band provided to fix the Hubble control unit.

Important:

- The detection area must be as close as possible to the surface of your POS or your furniture where your Guests will trigger the diffusion.
- As the hand above the detection area triggers the fragrance diffusion, it is important to indicate with a mark its precise location.

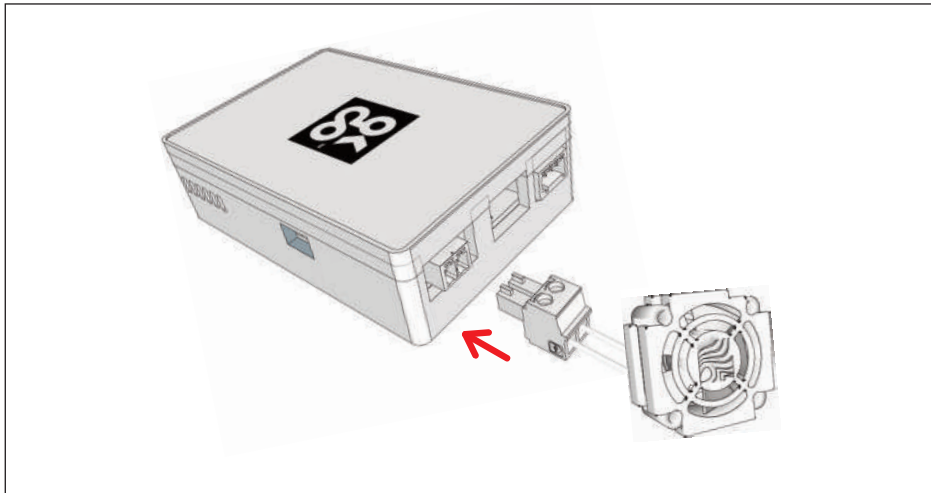
DETECTION AREA OF THE HUBBLE CONTROL UNIT





- Fix the fan and the capsule inside your furniture or POS. The fan and capsule holder can be fixed with screws or scotch tap to your support, or by any efficient solution.

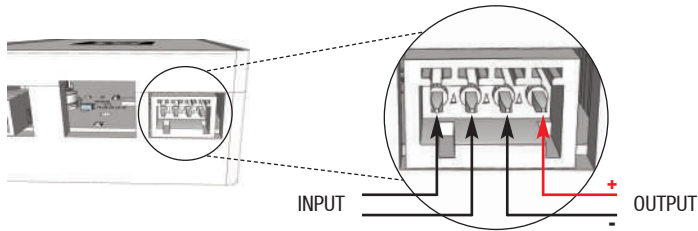
CONNECTORS



- The fan must be connected to the left connector of the Hubble control unit.

The right connector can be used for output and input commands.

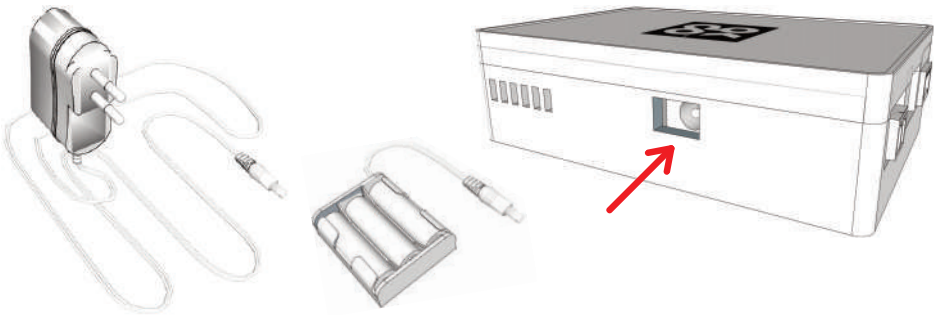
- Input:** Receives a dry contact to trigger a diffusion.
(example: the diffusion can be triggered with a push button).
- Output:** Powers 5 VDC when a diffusion is running.
(example: a light signal during the fragrance diffusion).



The Male connector is not provided. Reference: Phoenix Contact 1881341

CONNECTING THE HUBBLE

- The power plug or the battery holder must be connected to the Hubble. The Hubble can either be powered by the power plug or battery holder (3 x LR6 AA).

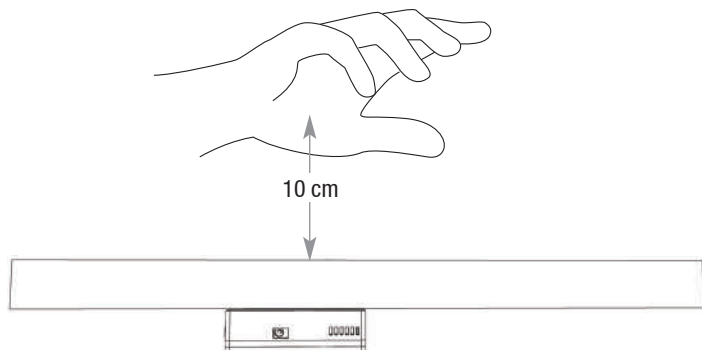


Important: When you connect the diffuser to the power, it will automatically scan his new environment for 15 seconds. Meanwhile it will not respond to any command.

HOW TO TRIGGER FRAGRANCES

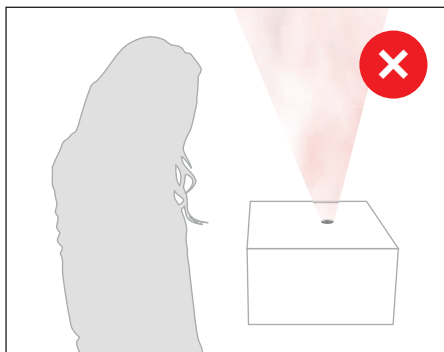
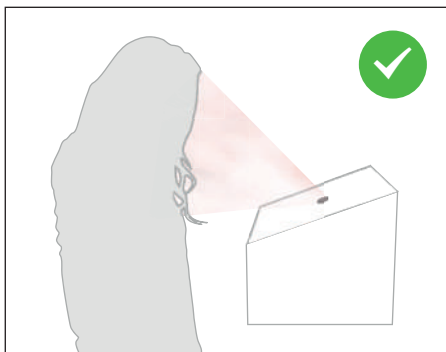
A hand will trigger the fragrance diffusion.

- The hand must be at 5-10 cm range (depending on the thickness of the material). The fragrance will be diffused for 30 seconds.



HOW TO POSITION THE FRAGRANCE AIR FLOW

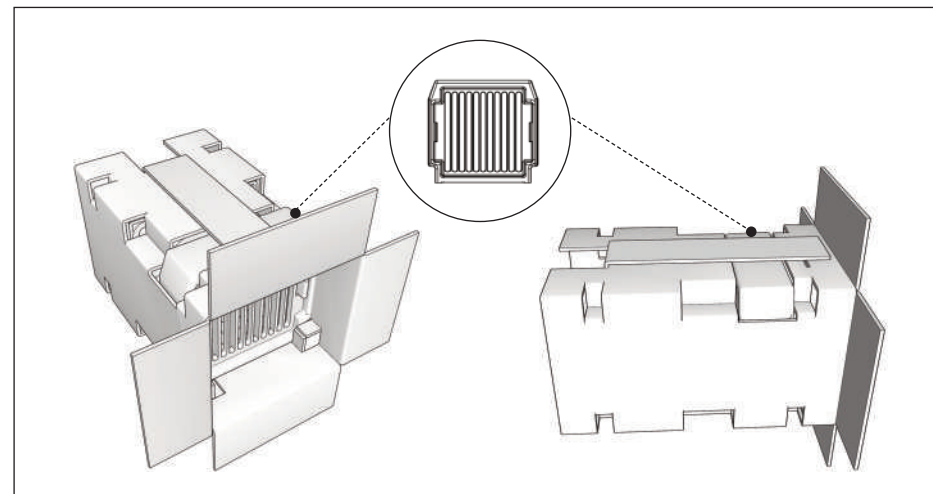
- Make sure the direction of the fragrance flow is directed toward the nose of the person who will trigger the fragrance diffusion.



Note: Even though the diffusion duration is 30 seconds, you may start to get the smell 2 to 10 seconds after, depending on the layout, the fragrance power and the surrounding environment.

PLACE OF THE CAPSULE IN THE SUPPORT

- Place the fragrance capsule (sold apart from the Hubble diffuser) into the support, as indicated in the illustration.



WARRANTY

Scentys warrants the Hubble diffuser starting from the purchase date.

The warranty covers manufacturing defects, not damage resulting from misuse.

If, during the warranty period, this product proves defective with normal use and care, please contact us at assistance@scentys.com.

Scentys is liable only for the cost of repairing and/or replacing the unit while under warranty.

NOTES

This image shows a single sheet of white paper with horizontal ruling lines. The lines are evenly spaced and run across the width of the page. There are no margins, text, or other markings on the paper.

NOTES

This image shows a full page of primary-ruled paper designed for handwriting practice. It features multiple rows of horizontal lines. Each row consists of three lines: a solid top line, a dashed middle line, and a solid bottom line. The rows are evenly spaced across the entire page, providing a template for practicing letter formation and alignment. There are no margins, text, or other markings on the page.



www.scentys.com / info@scentys.com