



SCENTYS

Excellence in Fragrance Diffusion

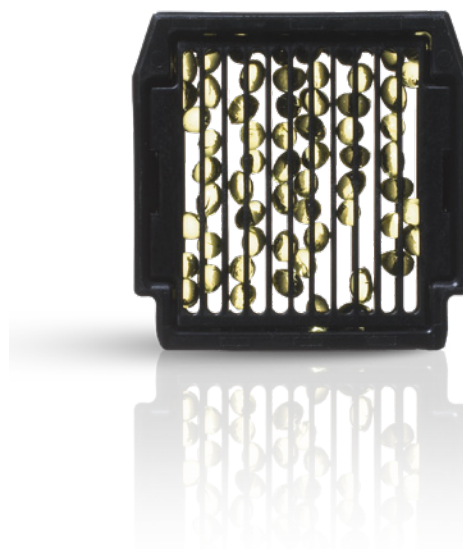
POCKET DUO


CATEGORY "INVISIBLE SOLUTIONS"

A perfect partner for facilitating the discovery of fragrances

Pocket Duo can be used to subtly diffuse a brand's scent or an aroma. It is an ideal way to add an olfactory dimension when launching a product, introducing a fragrance to customers in a shop, or at trade shows.

With its subtle and silent diffusion, ability to blend into any décor and ultra-compact design, the Pocket Duo is suitable for use with different types of materials or architectures (furniture, POS, windowfronts). It can be programmed to be activated by a motion sensor or a remote button. Users can also select the duration and intensity of diffusion.



- Perfect reproduction of fragrances with no after-scent
- Invisible system
- Range of up to 20 square meters
- Ideal for launching products, introducing fragrances to customers in shops, and for use at trade shows
- Dry diffusion technology
- Made in France 

TAILORED SUPPORT

- Technical expertise
- Fragrance expertise
- Health and safety expertise



TECHNICAL SPECIFICATIONS



- Diffusion cycle **Programmable**
- Each capsule has a lifespan of **20 hours** (i.e. 2,500 30-second pushes)
- Dimensions **H 5.5cm x W 12.5cm x D 4cm**
- Weight **0.20 kg**
- Universal power supply **100-240V (50-60 Hz)**
- Sound level **28 dB**
- Warranty **2 years from date of purchase**
- Country certifications 